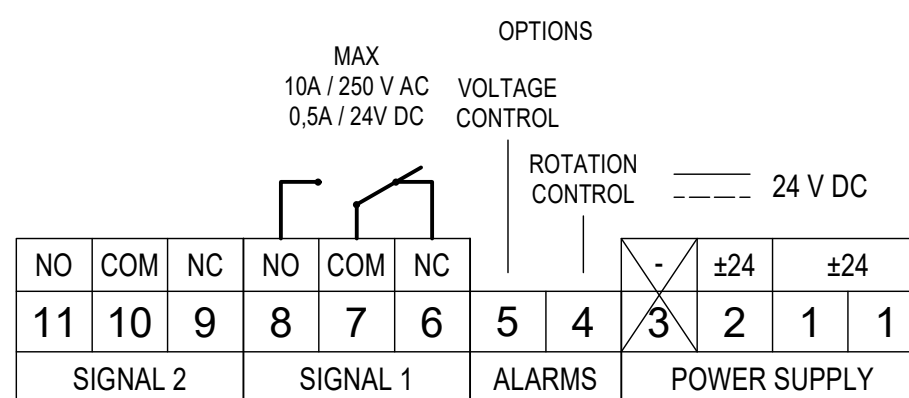
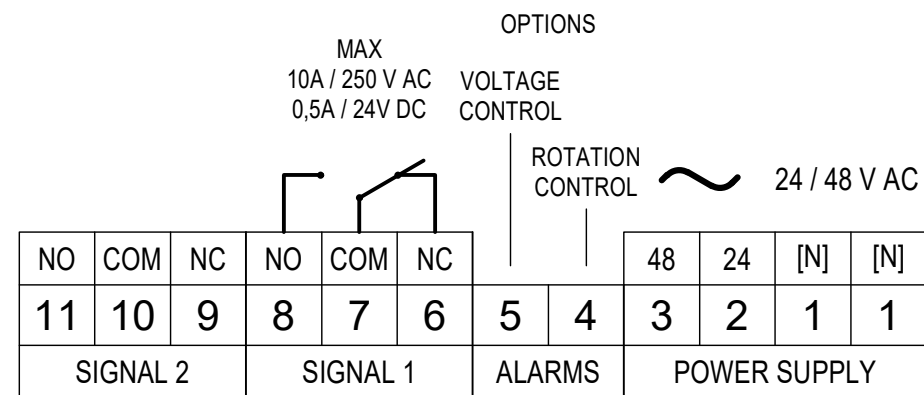
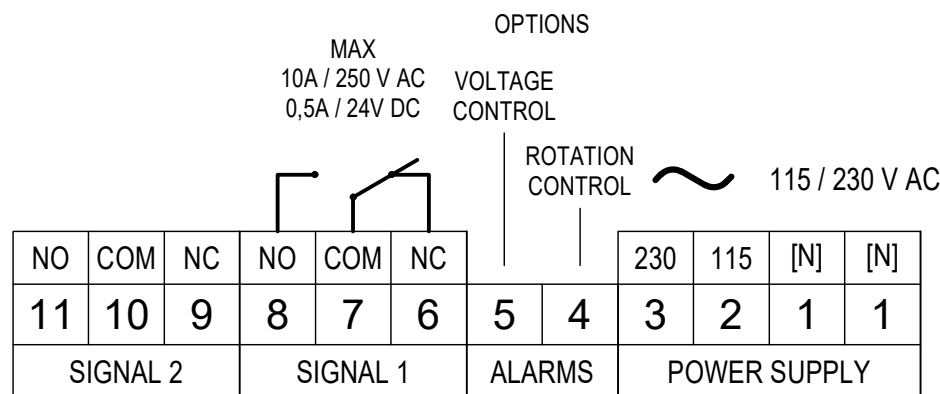
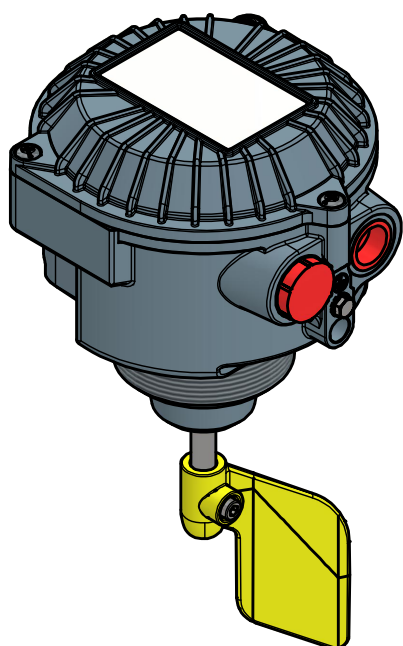


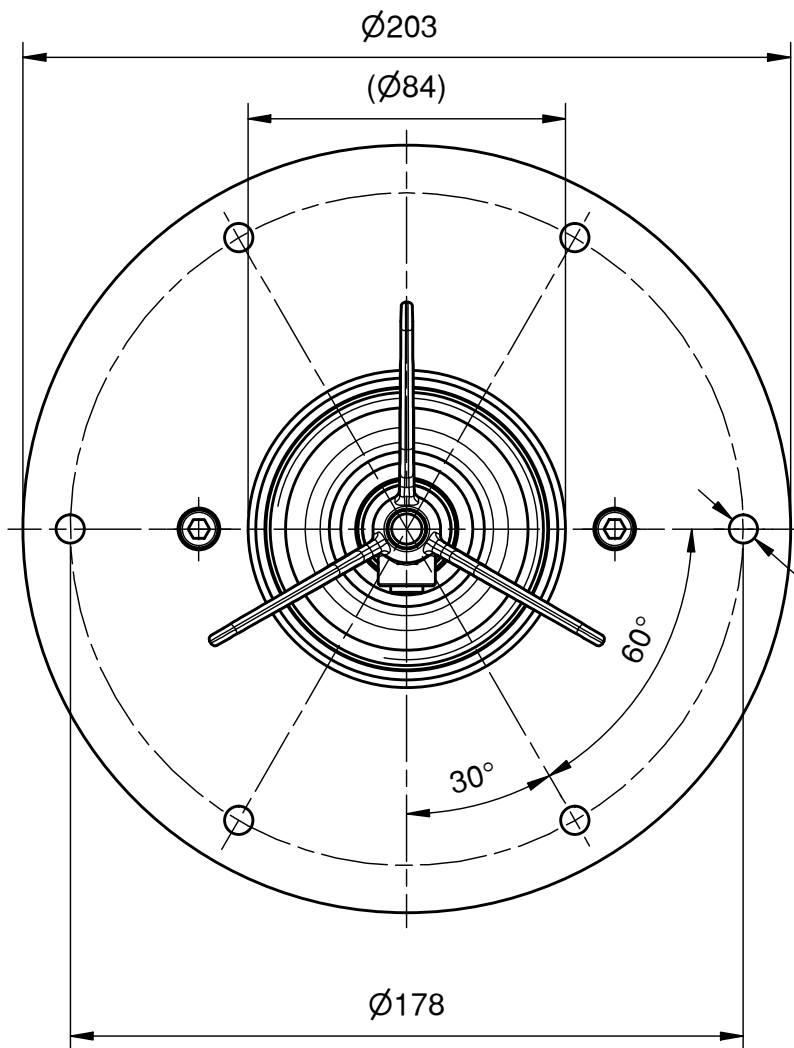
PFG05C



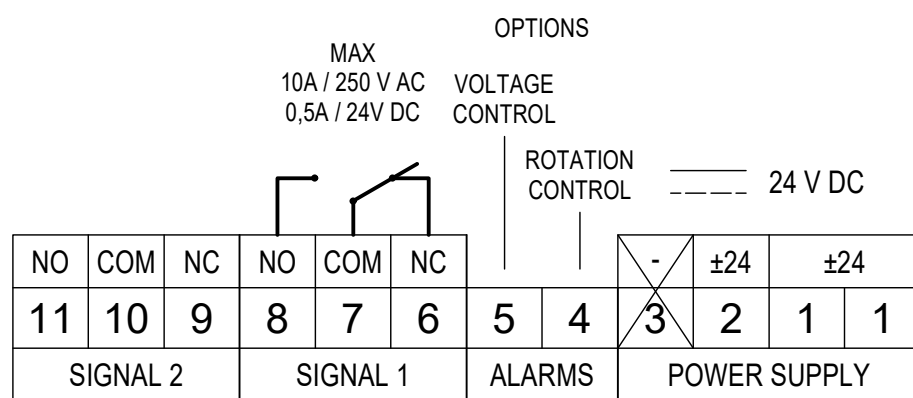
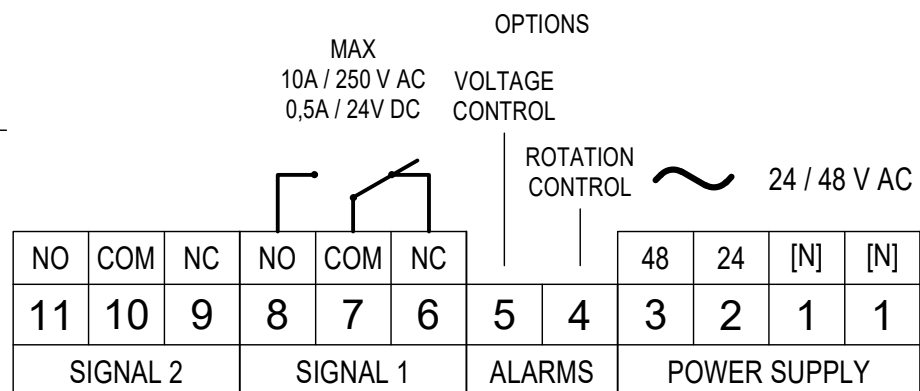
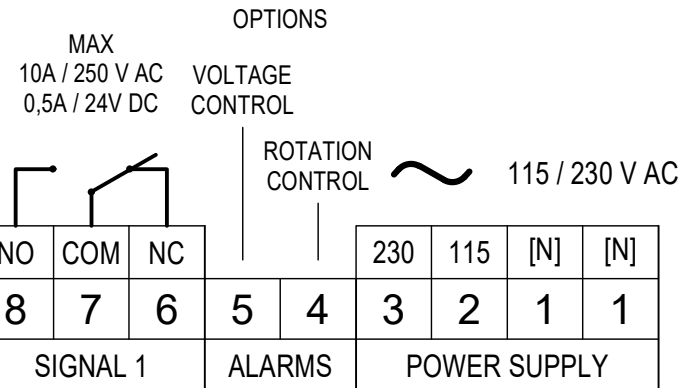
TERMINALS: male FASTON (.250 series / 6,3x0,8 mm)

Model	PFG05C
Weight	1.64 [kg]
Power supply	- Bivoltage 115/230[V] (50...60Hz) - Bivoltage 24/48[V] (50...60Hz) - DC 24[V]
Consumption	4 [W] max
Signal	SPDT / max. 10[A]-250VAC / 0,5[A]-24VDC
IP grade	IP65
Housing	Aluminium (powder coated)
Connection	G 2" 1/2 - Aluminium
Ambient temperature	-20 < Ta < +70 [°C] -40 < Ta < +70 [°C] LOW TEMPERATURE VERSION ONLY
Process temperature	-20 < Tp < +70 [°C]
Pressure range	+0,8 ... +1,1 bar [abs] +0.8 ... +5 bar [abs] (non-ATEX version)
Directives	2011/65/EU (RoHS) 2014/30/EU (EMC) 2014/34/EU (ATEX) 2014/35/EU (LVD)
ATEX Marking	Ex II 1/2 D Ex ta/tb IIIC T85°C IP65Da/Db Ex II 3 D Ex tc IIIB T85°C Dc (Lamp version)
IECEx Marking	Ex ta/tb IIIC T85°C Da/Db

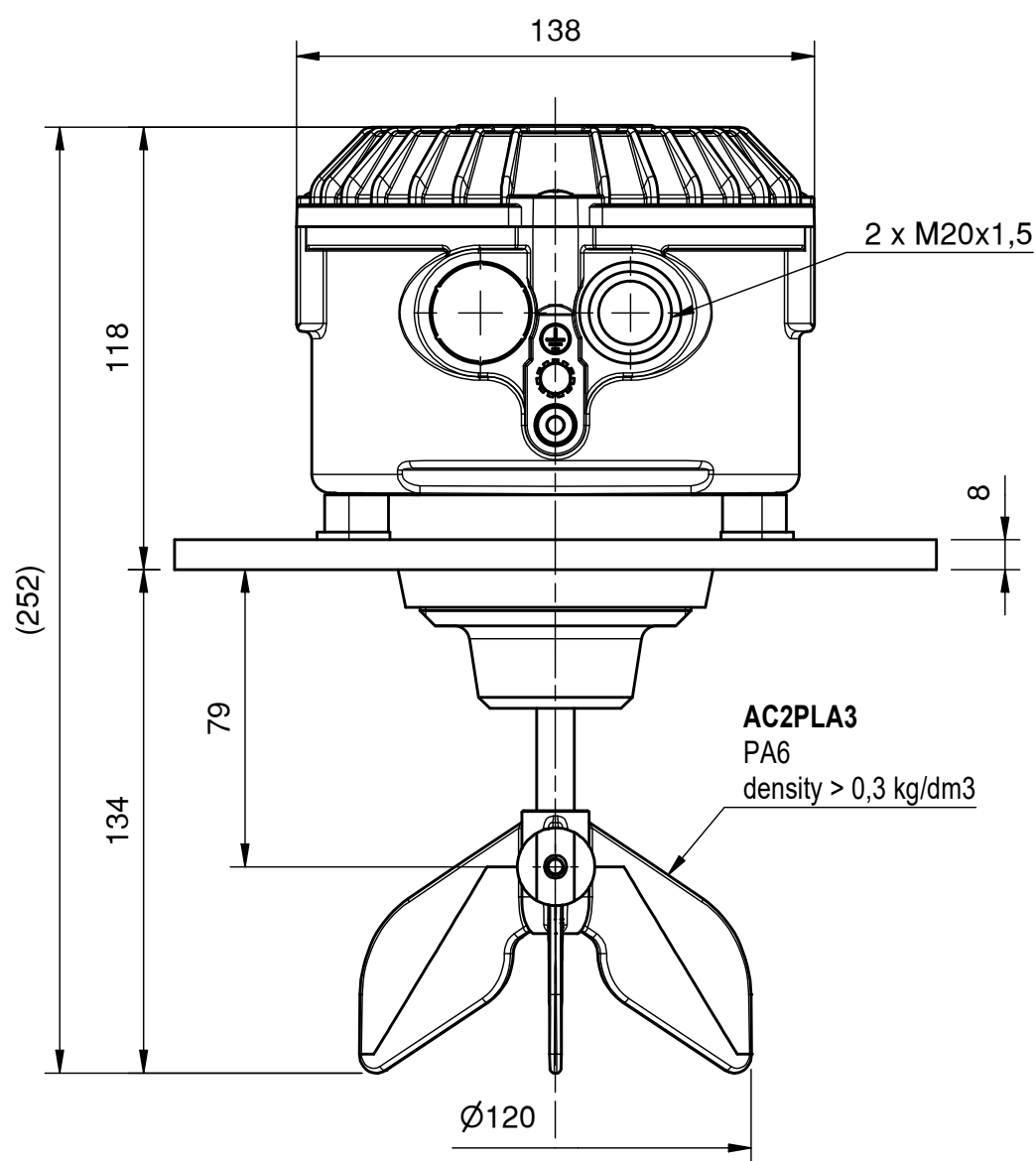
03	12/06/26	Agg. generale + portata contatti	0022/26	Salati A.
REV.	DATA - Date	DESCRIZIONE MODIFICA - Description of the change	ID	DIS./VER. - Drawn/Checked
CODICE - Code		DESCRIZIONE - Description		
0602 0002 00		SCHEDE TECNICA PFG05C		
DISEGNATO Drawn by Colli S.		SCALA Scale 1:2		
DATA Date 25/07/25		FORMATO Format A3		
LE DIMENSIONI SONO ESPRESSE IN mm SALVO DIVERSA INDICAZIONE All dimension are in mm unless otherwise indication		FOGLIO Sheet 1		DI Of 4
FILE CAD Cad File 0602_0002_00-03.idw		MASSA Mass 1.64		kg
Via dell' Industria, 12 42025 Cavriago (RE) - Italy www.camlogic.it		Tel. 0522 942641		REV. 03



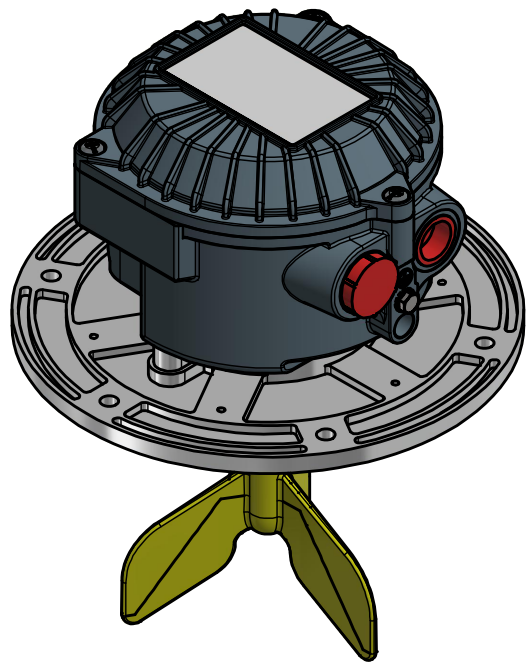
N. 6 Ø7,5



TERMINALS: male FASTON (.250 series / 6,3x0,8 mm)



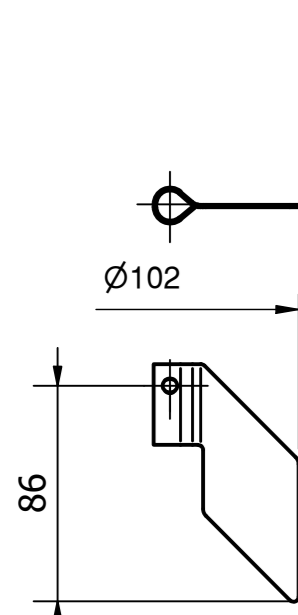
PFG05C F



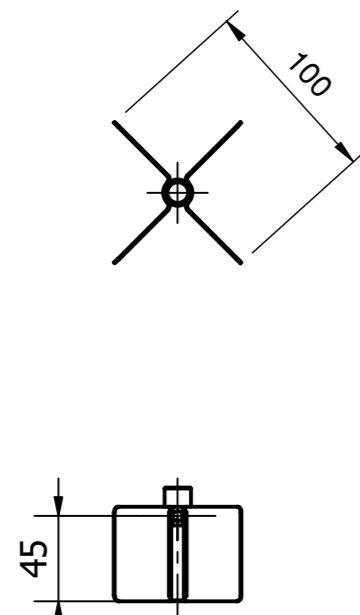
Model	PFG05C F
Weight	2,19 [kg]
Power supply	- Bivoltage 115/230[V] (50...60Hz) - Bivoltage 24/48[V] (50...60Hz) - DC 24[V]
Consumption	4 [W] max
Signal	SPDT / max. 10[A]-250VAC / 0,5[A]-24VDC
IP grade	IP65
Housing	Aluminium (powder coated)
Connection	Flange - Aluminium
Ambient temperature	-20 < Ta < +70 [°C] -40 < Ta < +70 [°C] LOW TEMPERATURE VERSION ONLY
Process temperature	-20 < Tp < +70 [°C]
Pressure range	+0,8 ... +1,1 bar [abs] +0.8 ... +5 bar [abs] (non-ATEX version)
Directives	2011/65/EU (RoHS) 2014/30/EU (EMC) 2014/34/EU (ATEX) 2014/35/EU (LVD)
ATEX Marking	Ex II 1/2 D Ex ta/tb IIIC T85°C IP65Da/Db Ex II 3 D Ex tc IIIB T85°C Dc (Lamp version)
IECEX Marking	Ex ta/tb IIIC T85°C Da/Db

03	12/06/26	Agg. generale + portata contatti	0022/26	Salati A.
REV.	DATA - Date	DESCRIZIONE MODIFICA - Description of the change	ID	DIS./VER. - Drawn/Checked
CODICE - Code		DESCRIZIONE - Description		
0602 0002 00		SCHEDE TECNICA PFG05C		
DISEGNATO Drawn by Colli S.		SCALA Scale 1:2		
DATA Date 25/07/25		FORMATO Format A3		
LE DIMENSIONI SONO ESPRESSE IN mm SALVO DIVERSA INDICAZIONE All dimension are in mm unless otherwise indication		FOGLIO Sheet 2		DI Of 4
FILE CAD Cad File 0602_0002_00-03.idw		MASSA Mass 2,19		kg
Via dell' Industria, 12 42025 Cavriago (RE) - Italy www.camlogic.it		Tel. 0522 942641		REV. 03

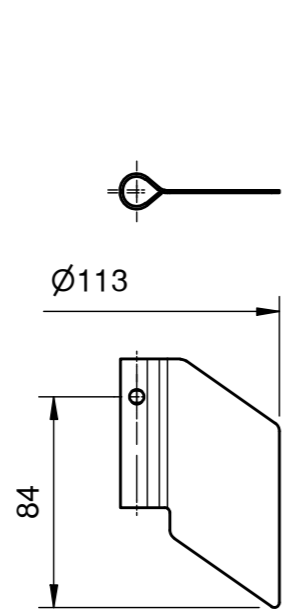
PADDLES



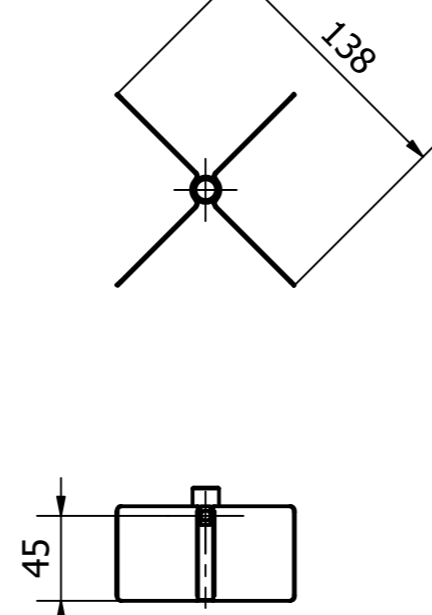
AC1 INOX
AISI 304
AISI 316
density > 1.0 kg/dm3



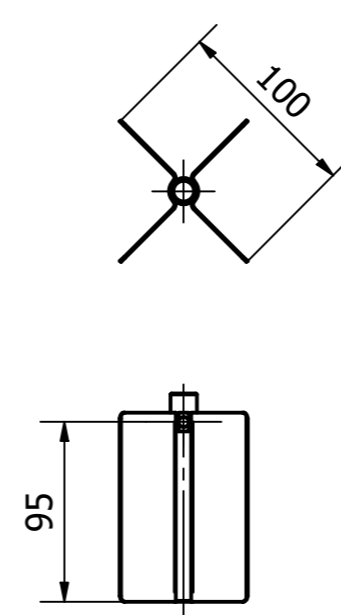
AC3 INOX
AISI 304
AISI 316
density > 0.3 kg/dm3



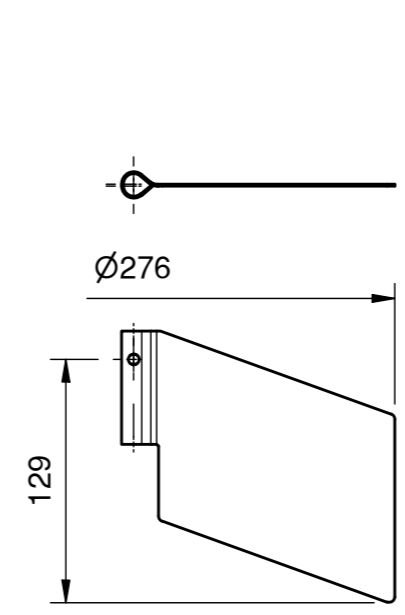
AC4 INOX
AISI 304
density > 0.5 kg/dm3



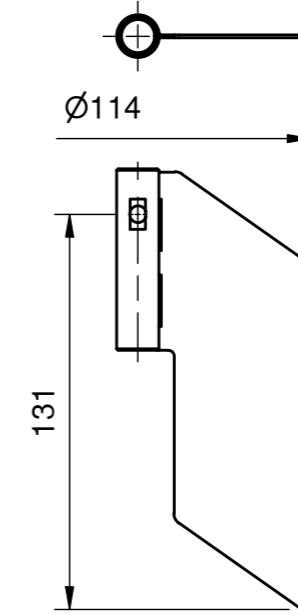
AC5 INOX
AISI 304
density > 0.2 kg/dm3



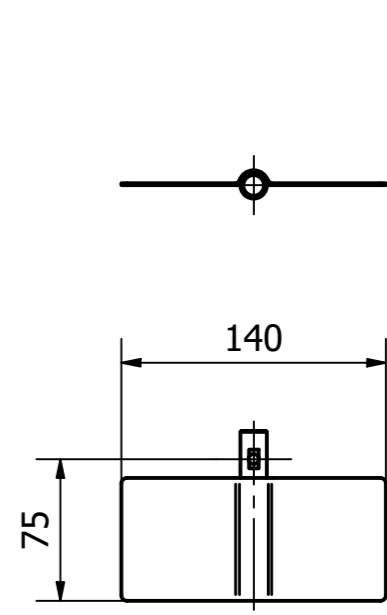
AC5L INOX
AISI 304
AISI 316
density > 0.2 kg/dm3



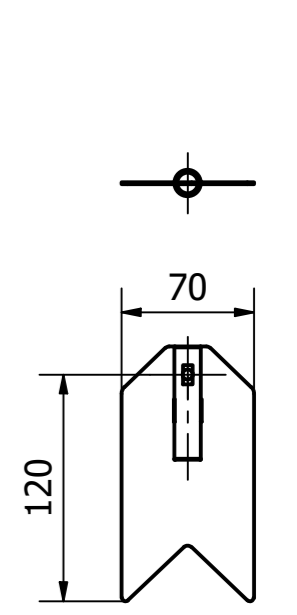
AC6 INOX
AISI 304
density > 0.1 kg/dm3



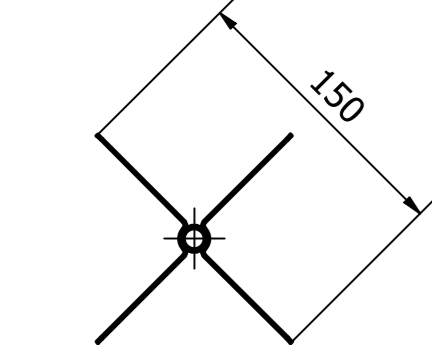
AC7 INOX
AISI 304
density > 0.3 kg/dm3



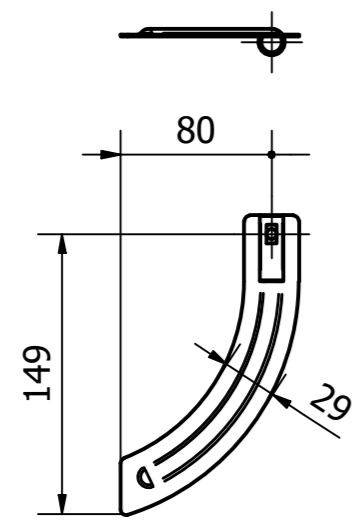
AC9 INOX
AISI 304
density > 0.2 kg/dm3



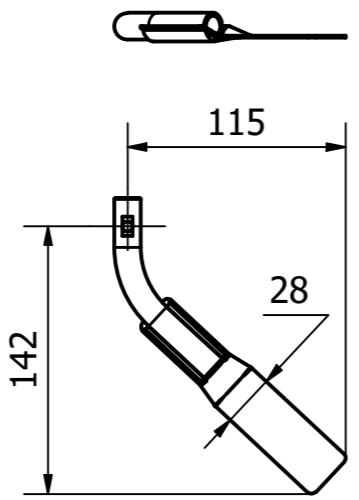
AC10 INOX
AISI 304
density > 0.6 kg/dm3



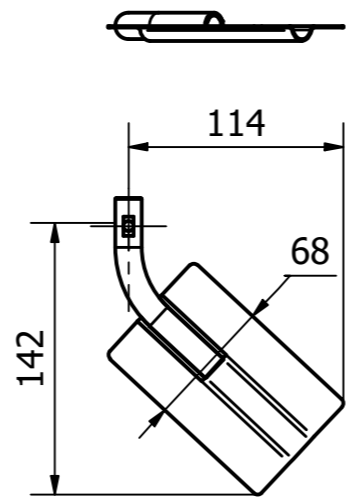
AC11 INOX
AISI 304
density > 0.1 kg/dm3



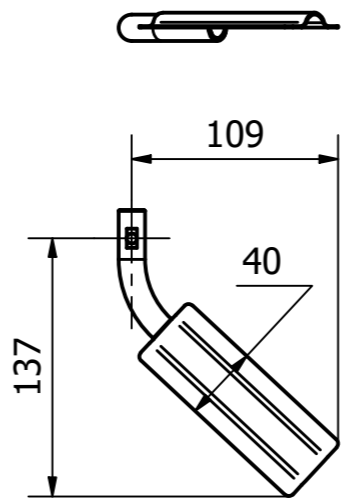
AC12 INOX
AISI 304
AISI 316
density > 0.4 kg/dm3



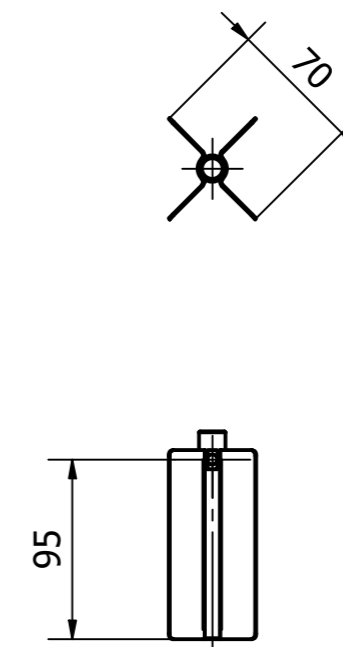
AC14 INOX
AISI 304
density > 0.4 kg/dm3



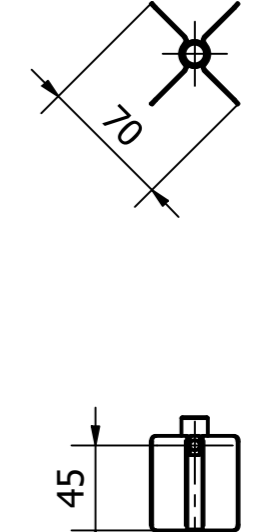
AC15 INOX
AISI 304
density > 0.2 kg/dm3



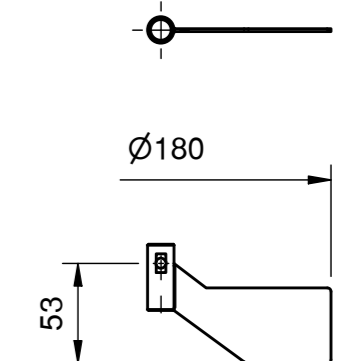
AC16 INOX
AISI 304
density > 0.3 kg/dm3



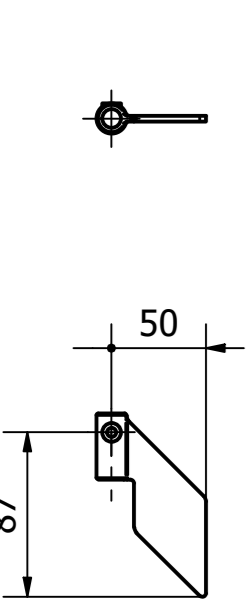
AC17 INOX
AISI 304
density > 0.4 kg/dm3



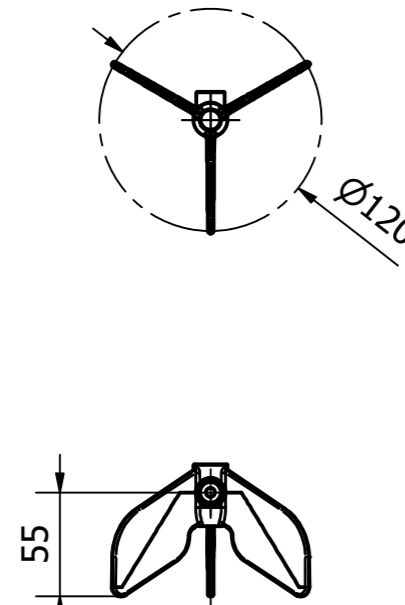
AC18 INOX
AISI 304
density > 0.7 kg/dm3



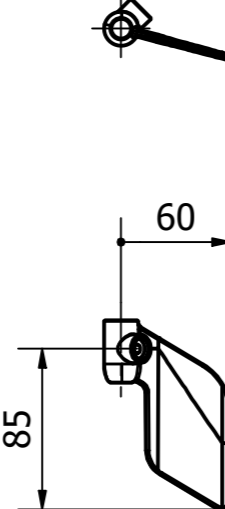
AC21 INOX
AISI 304
AISI 316
density > 0.25 kg/dm3



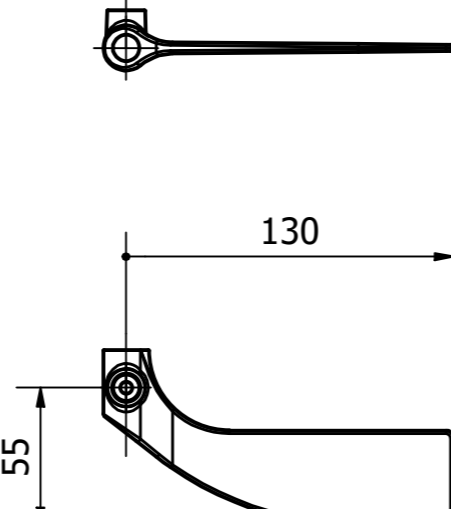
AC1 PLA
PA 6
density > 1.0 kg/dm3



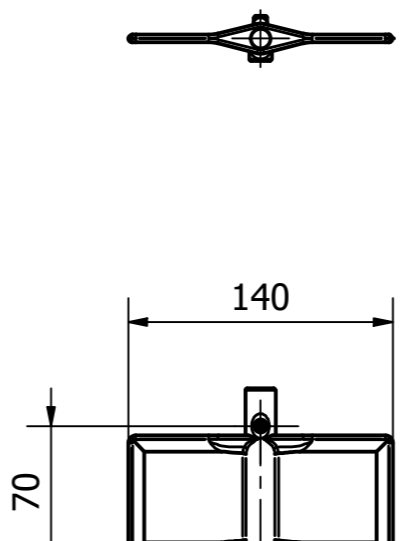
AC2 PLA
PA 6
density > 0.3 kg/dm3



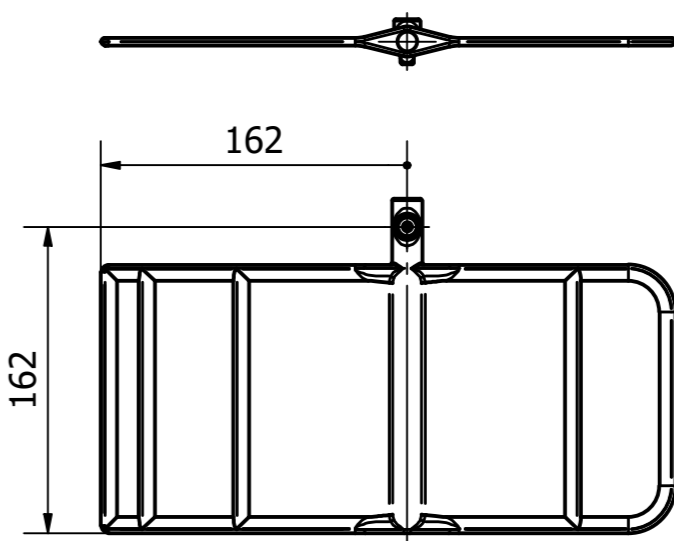
AC4 PLA
PA 6
density > 0.5 kg/dm3



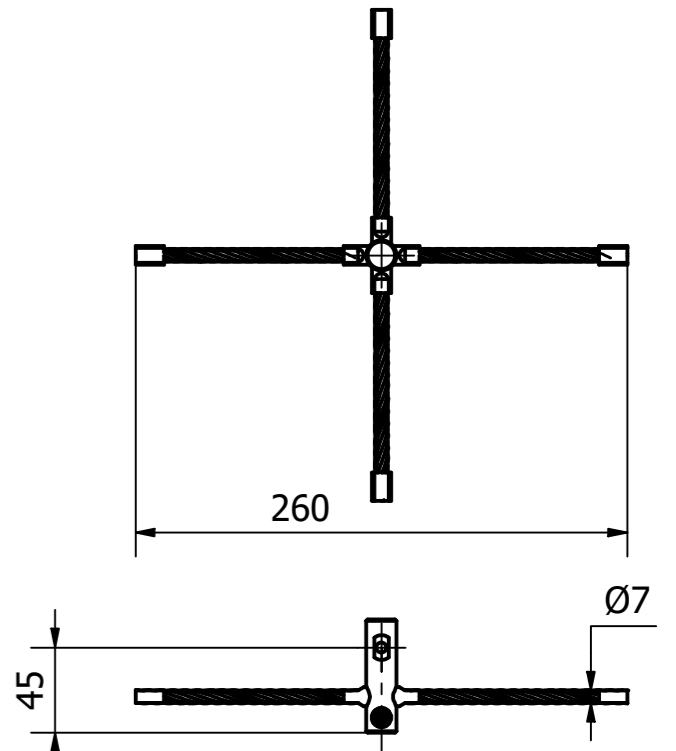
AC19PLA1
Lathiom 52/11-08 PD02
density > 0.3 kg/dm3



AC9 PLA
PA 6
density > 0.2 kg/dm3



AC13 PLA
PA 6
density > 0.02 kg/dm3



AC8
galvanized steel (wires)
density > 2.0 kg/dm3

03	12/06/26	Agg. generale + portata contatti	0022/26	Salati A.
REV.	DATA - Date	DESCRIZIONE MODIFICA - Description of the change	ID	DIS./VER. - Drawn/Checked
CODICE - Code 0602_0002_00		DESCRIZIONE - Description SCHEDA TECNICA PFG05C		
DISEGNATO Colli S.		SCALA 1:3		
DATA 25/07/25		FORMATO A2		
LE DIMENSIONI SONO ESPRESSE IN mm SALVO DIVERSA INDICAZIONE All dimension are in mm unless otherwise indication		FOGLIO 3		
FILE CAD 0602_0002_00-03.idw		DI 4		
www.camlogic.it		MASSA 0,03		
Tel. 0522 942641		kg 03		

